

Roll No.

--	--	--	--	--	--	--	--

Code No : BEM5201

- ❖ **Please write the Serial Number of the question before attempting it.**
- ❖ 15 minute time has been allotted to read this question paper. The question paper will be distributed at 9.15 a.m. From 9.15 a.m. to 9.30 a.m., the students will only read the question paper and will not write any answer on the answer – book during this period.

YEARLY ASSESSMENT

CLASS – V

MATHEMATICS

Time allowed: 2½ hour

Maximum Marks: 80

General Instructions:

The question paper is divided into **five** sections

- (i) SECTION A contains question number 1 to 30. Each carries 1 mark. Answer **all** the questions.
- (ii) SECTION B contains question number 31 to 35. Each carries 2 marks. Answer **any 4** questions.
- (iii) SECTION C contains question number 36 to 41. Each carries 3 marks. Answer **any 4** questions.
- (iv) SECTION D contains question number 42 to 48. Each carries 4 marks. Answer **any 5** questions.
- (v) SECTION E contains question number 49 to 50. Each carries 5 marks. **Both are compulsory.**

SECTION-A**I. MULTIPLE CHOICE QUESTIONS:**

1. A square has _____ sides.

- (a) 4
- (b) 3
- (c) 5
- (d) 6

2. A mirror image is called _____.
- (a) Rotational (b) Asymmetrical
(c) Reflection (d) Symmetry
3. Horizontal axis is called the _____.
- (a) Y-axis (b) Origin
(c) X-axis (d) None of these
4. 1 kg = _____ g.
- (a) 1000 (b) 100
(c) 10,000 (d) 10
5. Longest dimension of an object is _____.
- (a) breadth (b) width
(c) height (d) length
6. Area is measured in _____.
- (a) cubic units (b) square units
(c) both a & b (d) none of these
7. $\square \times 2 + 3 = 27$.
- (a) 11 (b) 17
(c) 12 (d) 15
8. Hexagon has _____ sides.
- (a) 5 (b) 6
(c) 4 (d) 7
9. $(0 \times 9) + 1 =$ _____.
- (a) 0 (b) 9
(c) 10 (d) 1
10. The amount of space inside an object is called _____.
- (a) Volume (b) Perimeter
(c) Area (d) Height

II. MATCH THE FOLLOWING:

PART – A

- | | | |
|-----------------------------|---|-------------------|
| 11. $1/2$ rotation | - | Fibonacci series |
| 12. Rupee $3/4$ | - | Area of rectangle |
| 13. Directions | - | order 2 |
| 14. 0,1,1,2,3,5,8,... | - | 75 paise |
| 15. length \times breadth | - | 8 |

PART – B

- | | | |
|-------------------------------|---|----------------------------------|
| 16. Length between two points | - | the alphabet 'L' |
| 17. $468 - 0$ | - | cubic units |
| 18. Volume | - | pictorial representation of data |
| 19. Smart chart | - | distance |
| 20. Right angle | - | 468 |

III. COMPLETE THE FOLLOWING:

21. An angle whose measure is 180° is called a _____ angle.
22. _____ is the relationship between distance on a map and corresponding distance on the earth surface.
23. Perimeter of square is _____ units.
24. Height is also called _____.
25. $12 \times 1000 =$ _____.
26. The place value of 8 in 0.864 is _____.
27. Find the missing pattern



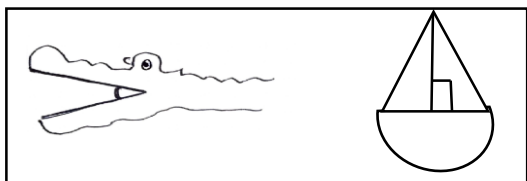
28. A circle has _____ lines of symmetry.

29. $9/10$ is written as _____.
30. Collection of information is called _____.

SECTION - B

IV. ANSWER THE GIVEN QUESTIONS :

31. Find the angles in the given diagram.

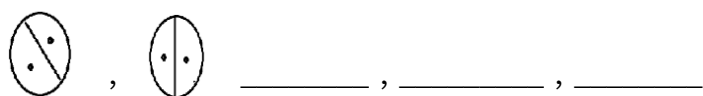


32. Multiply 14285×2 .
33. Find the area of a thick paper sheet whose length is 10 cm and width is 5 cm.
34. Write in metre:
- i) 3 metre 17 centimetre = metre.
- ii) 7 metre 52 centimetre = metre.
35. Draw one shape which will look the same after $1/3$ turn.

SECTION - C

V. SOLVE THE FOLLOWING:

36. Find the volume of a cubical box with each side measuring 3 cm.
37. Give half a turn to the numbers from 0 to 9.
38. Find what should come next?



39. Use Bela's method to multiply the numbers.

$$42 \times 35$$

40. Convert decimal into fraction:

(a) 0.9

(b) 3.13

41. Find the perimeter of a rectangular garden of length 1000 cm and breadth 500 cm.

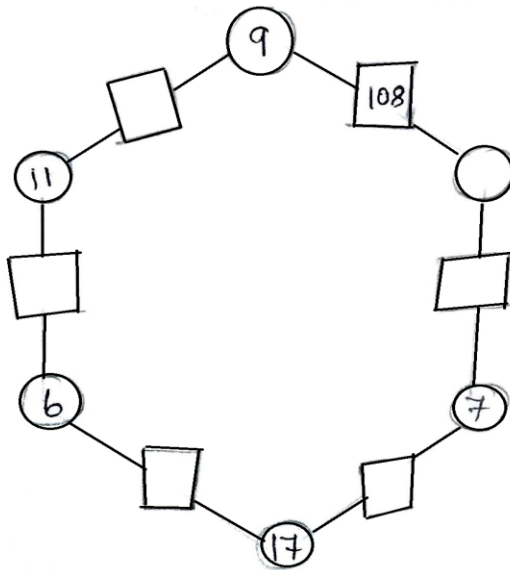
SECTION - D

VI. WORD PROBLEM :

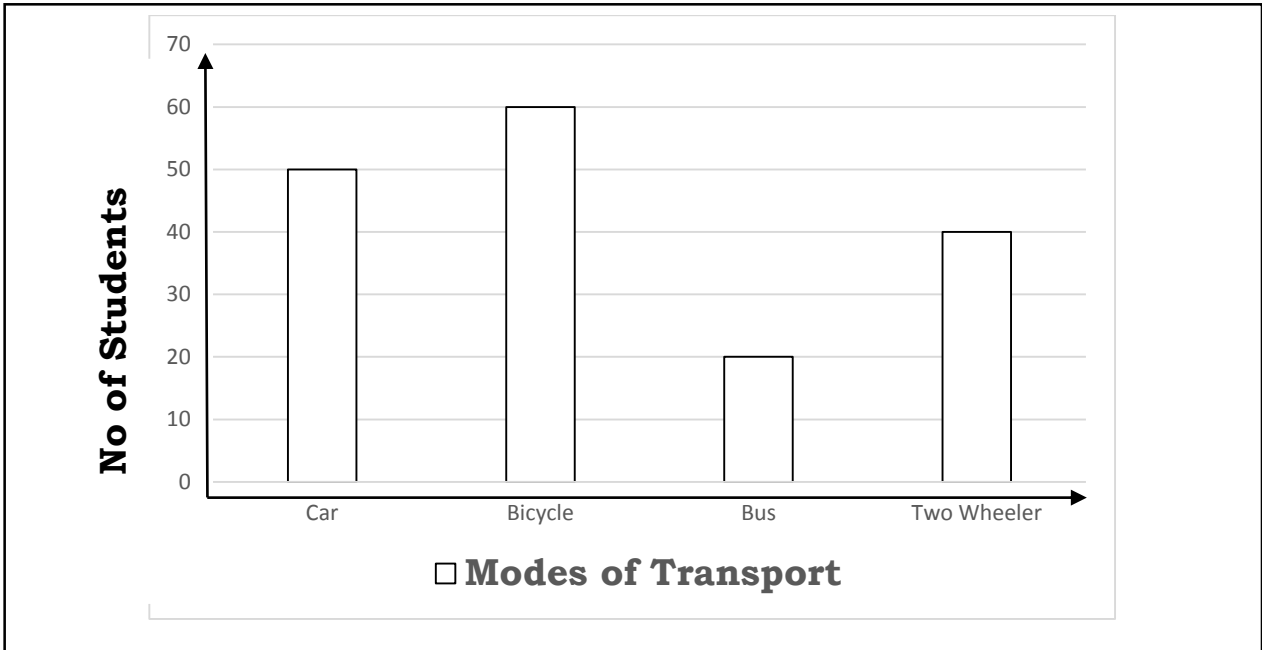
42. Divide the following number using step method.

$$969 \div 4$$

43. Fill the hexagon with numbers.



44. From the Bar chart, answer the following questions:



- (a) How many students prefer Bicycle?
- (b) Which mode of transport is mostly preferred by the students?
- (c) How many students prefer two-wheeler?
- (d) Which mode of transport is least preferred by the students?

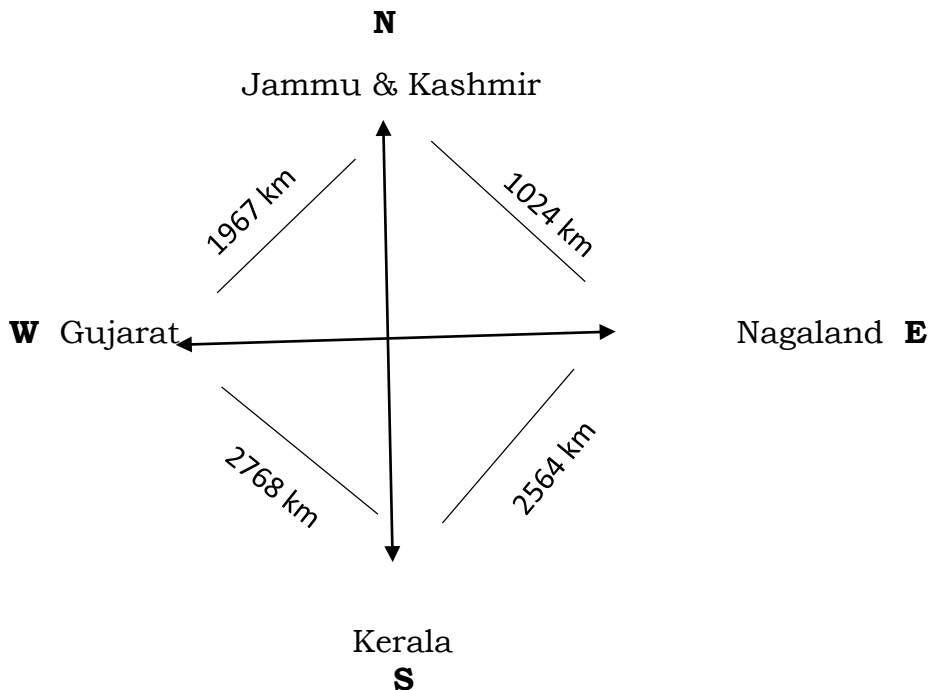
45. What is the area of the triangular carpet placed in a square room of area 400 sq .cm?

46. A man wants to build his house in his land, whose dimensions are 10 m long, 6 m wide and 8 m high. What will be the capacity of the house?

47. Kiran went shopping with Rs.200. Look at the bill. The Shop keeper forgot to put the points correctly in the prices. Put the point in the correct place and find out the total amount of the bill.

ITEM	QUANTITY	PRICE(rupees)
Soap	1	1250
Green Gram	1 kg	5025
Tea	250 g	2725
Coconut Oil	1 litre	6000
TOTAL =		

48. Look at the diagram and answer the questions that follow:



- i) In which direction is Jammu and Kashmir situated?
- ii) What is the distance between Gujarat and Nagaland?
- iii) Which is the shortest distance to reach Kerala from Jammu and Kashmir?
- iv) What is the distance between Nagaland and Kerala?

SECTION - E

VII. PRACTICAL GEOMETRY (COMPULSORY QUESTION):

49. Draw an angle measuring 120° .

VIII. GRAPH (COMPULSORY QUESTION):

50. Find the tally mark for the given objects of 25 students in a class.

Pencil	Pen	Eraser	Eraser	Pen
Pen	Pencil	Sharpener	Pencil	Eraser
Eraser	Pencil	Pencil	Pen	Sharpener
Sharpener	Pen	Pen	Eraser	Pencil
Pen	Eraser	Pencil	Pen	Sharpener
