

I. Answer in one word: 5x1=5

1. Production of new individuals from the vegetative part of parent is called ____.

2. A spore producing plant is ____.

3. When current is switched 'ON' in a room heater, it ____.

4. The fusion of male and female gametes is termed as ____.

5. The magnetic effect of the current was discovered by ____.

II. Answer in short: (Any 3) 3x2=6

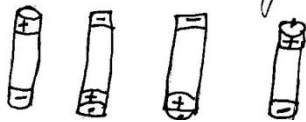
6. What are the different agents of pollination?

7. What do you mean by pollination?

8. Name any two effects of electric current.

9. When the current is switched on through a wire, a compass needle kept nearby gets deflected from its North South position Explain.

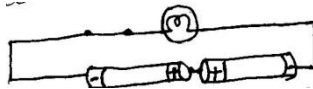
10. There are four cells fixed on a board. Draw lines to indicate how you will connect their terminals with wires to make a battery of your cells.



III. Answer in paragraph: (Any 3) 3x3=9

11. How does the process of fertilisation take place in flower?

12. The bulb in the circuit shown in figure does not glow. Can you Identify the problem? Make necessary changes in the circuit to make the bulb glow.



13. An electrician is carrying out some repairs in your house. He wants to replace a fuse by a piece of wire. Would you agree? Give reasons for your response.

14. Explain the difference between - pollination and cross - pollination.

15. Describe the various ways by which seeds are dispersed.

IV. Answer in detail: 1x5=5

16. a) Describe the different method of asexual reproduction. Give example.

b) With the help of a diagram, show the working of an electric bell?

I. Answer in one word: 5x1=5

1. What are bacteria and fungi in a food chain?

a) Herbivores b) Carnivores c) Omnivores d) Decomposers

2. Draw convex lens.

3. Fill in the blanks:

(i) ____ is the gaseous form of water.

(ii) The process of water seepage into the ground is called ____.

4. Which type of mirror can form a real image?

5. Which of the following is not a forest product?

a) Gum b) Plywood c) Kerosene d) Sealing wax

II. Answer in short: (Any 3) 3x2=6

6. Explain why there is no waste in a forest.

7. What are the different sources of water?

8. What is virtual image? Give one situation where a virtual image is formed.

9. Wells are dug to get water for irrigation at a place. But they dry up after sometime. Why?

10. Consider the data given below:

Insects, eagle, grass, snake, frog. Draw a food chain to represent the given data.

III. Answer in paragraph: (Any 3) 3x3=9

11. Write the uses of concave mirror.

12. Explain how ground water is recharged.

13. What are decomposers? Name any two of them. What do they do in the forest?

14. Write any three characteristics of an image formed by a plane mirror.

15. Suggest three ways for water conservation.

IV. Answer in detail: 1x5=5

16. a) Explain the factors responsible for the depletion of water table.

(OR)

b) Explain the role of forest in maintaining the balance between oxygen and carbon dioxide in the atmosphere.

13.03.2020 EVERWIN VIDHYASHRAM SR. SEC. SCHOOL Marks: 25
STD: VII YA-COMPREHENSIVE REVISION PROGRAMME Time: 1hr
(Beau, Bli, Bri, Eff, Fas) SOCIAL (PART - II)

I. Fill in the blanks: 5x1=5

1. ____ is an architectural form in which the weight of the superstructure is carried by the arches.
2. ____ grow in the region of moderate rain.
3. Stamping a product with a particular name or sign is called as ____.
4. ____ are the temperate grasslands of South Africa.
5. ____ is used for sectarian religious outlook usually against other religions.

II. Answer in short: (Any 3) 3x2=6

6. Who constructed Agra Fort? How many labourers were used to construct it?
7. Which are the two factors on which the growth of vegetation depends?
8. Name various forms of communication.
9. Who were the very powerful Governors of Awadh and Bengal?

III. Answer in paragraph: (Any 2) 2x3=6

10. How did a temple communicate the importance of a king?
11. What is Branding? Why did the manufacturers give the product a specific name?
12. Write some effects of Chinook.

IV. Answer in detail: (Any 1) 1x4=4

13. Distinguish between Public Health Services and Private Health Services.
14. Describe how Forts were constructed during Shah Jahan's reign?

V. Value Based Questions: 1x2=2

15. Write any 2 points about prairies.

VI. Mark the following in the given map: 4x½=2

16. a) Greenland b) Canada c) Mexico d) Caribbean Sea

13.03.2020 EVERWIN VIDHYASHRAM SR. SEC. SCHOOL Marks: 25
STD: VII YA-COMPREHENSIVE REVISION PROGRAMME Time: 1hr
(Ama, Cre, Daz, Int, Ple) ENGLISH (PART - II)

I. Synonyms: 2x1=2

1. Slammed -
2. Immense -

II. Antonyms: 2x1=2

3. Rugged X
4. Perfect X

III. Frame sentences: 1x1=1

5. Scream -

IV. Explain with Reference to the Context: 2x1=2

6. "What's this? Roared the real Colonel, catching sight of him. 'Imposter!' He was".

a) What is the story about?

b) What does the word 'Imposter' implement?

V. Write short answers for the following: (Any 3) 3x1½=4½

7. The writer calls professor Branestawm's laboratory his inventory. Explain.

8. What impact do mountains have on a climber?

9. What were the evidences the poet speaks about the absent mindedness of the muddle head?

10. What did the muddle head do in the train?

VI. Answer any one in paragraph: (Any 1) 1x2½=2½

11. What was the reaction of Professor Branestawm after the invention?

12. Each man carries within himself his own mountain peak. What does the narrator mean? How can one conquer it?

13. His way of preparing food seems to be funny. In what way? What were the words mis-spelt by the Muddle Head in this poem?

VII. Answer any one in detail: 1x3=3

14. 'Climbing the mountain within: Is the narrator trying to speak about Mt. Everest? Give reason if not.

15. List out the incidents of Professor Branestawm in short summary.

16. What did Jo do for dinner? What happened during dinner?

VIII. Lexical Skills: (Any 1)

1x3=3

17. Write a letter to your friend describing about our school's various contests and competitions and how it is useful to you.

(OR)

18. A sailor took his pet monkey with him to sea trip – terrible storm overturned ship – a dolphin saved the monkey's life – took monkey to an island – monkey said that he was a prince – Dolphin understood his lie – left monkey alone in the island.

Write a story based on the hints given above and give suitable title and moral.

IX. Grammar: (Rewrite as directed)

5x1=5

19. I told my brother that I had locked the room. (Change into direct speech)

20. Meera told me, 'Don't believe Amir's words?' (Change into indirect speech)

21. I have to get up early ____ I'll be late for class again. (Fill with conjunctions)

22. It kept on raining for three days. (Identify the gerund)

23. The switch is too high to reach it. (Find out the infinitive)