

GENERAL INSTRUCTIONS:

Section - A: $30 \times 1 = 30$ Each question carry 1 mark.

Section - B: $8 \times 3 = 24$ Each question carry 3 mark. All questions are compulsory.

Section - C: $4 \times 5 = 20$ Each question carry 5 mark. Answer any four questions (Q. No. 42 Compulsory)

Graph: $6 \times 1 = 6$ (Compulsory question)

SECTION - A

I. Multiple choice questions: (Each carries one mark)

1. Base 2. Equation 3. Pictograph 4. Ratio 5. 1
6. Numerals 7. 1 8. |||| 9. 0 10. 1000

II. Match Me:

GROUP - A

11. Monomial 12. Expression 13. Proportion 14. 1,00,00,000 15. $-5 + 5$

GROUP - B

16. Square Number 17. Smallest Even Prime Number
18. Smallest whole numbers 19. Even Number
20. Prime Number

III. Complete Me:

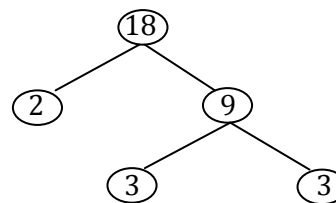
21. Unitary 22. Extremes 23. 1,000
24. 400 25. Whole 26. 25
27. X axis 28. Four (or) 4 29. 6.15 30. 52

SECTION - B

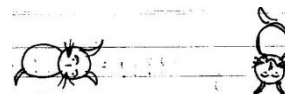
IV. Solve the following:

31. $x + 7 = 20$
 $x = 20 - 7$
 $x = 13$ Ans: $x = 13$
32. Cost of 1kg of apples = ₹12
Cost of 10kg of apples = ?
 $12 \times 10 = 120$
The cost of 10kg of apples = ₹120
33. $60547 \rightarrow 60,547$
Sixty thousand five hundred forty seven.
34. 56, 57, 58, 59, 60, 61, 62, 63, 64, 65, 66, 67, 68, 69, 70, 71, 72, 73, 74,
Ans: 19 numbers.

35.



36.



37. No line of symmetry

3 lines of symmetry

38.  Represent = 20 flowers

 Represent = 2×20 flowers

Total number of flowers = 40

SECTION - D

V. Do the sums: (Q. No. 42 compulsory)

39. a) $2y + 11$ b) $x - y$ c) 0 d) $\frac{x}{z}$

e) $\frac{x}{0}$ (or) not defined

40. i) 100 paise : ₹1 ii) 30 min : 1hr
100 paise : 100 paise 30 min : 60 min
1 : 1 30 : 60 ($\div 10$)
3 : 6 ($\div 3$)
1 : 2

iii) 12 : 15 ($\div 3$)
4 : 5

41. Predecessor of 9999 = $99999 - 1$
= 99998

99,998 \rightarrow Ninety nine thousand nine hundred ninety eight.

42. Population in the year 1998 = 9,65,002
Population increased by = (+) 1,05,550
Population in the year 2008 = 10,70,552
Population decreased by = (-) 525
Population in the year 2009 = 10,70,027

Ans: Population in the year 1998 = 9,65,002
Population in the year 2008 = 10,70,552
Population in the year 2009 = 10,70,027

43. 10780524 = 4 is divisible by 2

$$\begin{aligned} 10780524 &= 1 + 0 + 7 + 8 + 0 + 5 + 2 + 4 \\ &= 27 \text{ is divisible } 3 \end{aligned}$$

10780524 is divisible by 2 and 3

So, 10780524 is divisible by 6.

SECTION - D

VI. Graph:

Refer Graph note (scale based on student's choice)